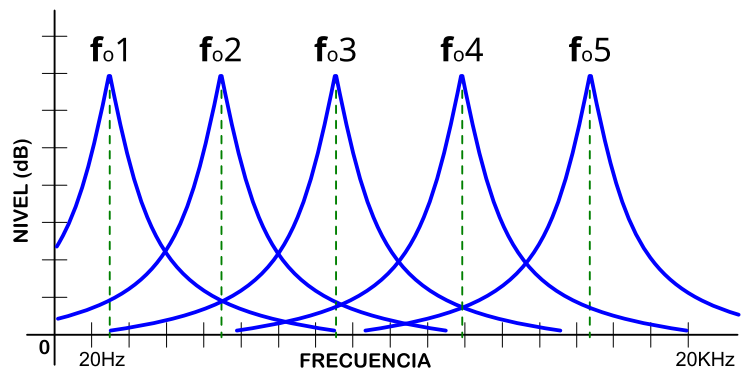
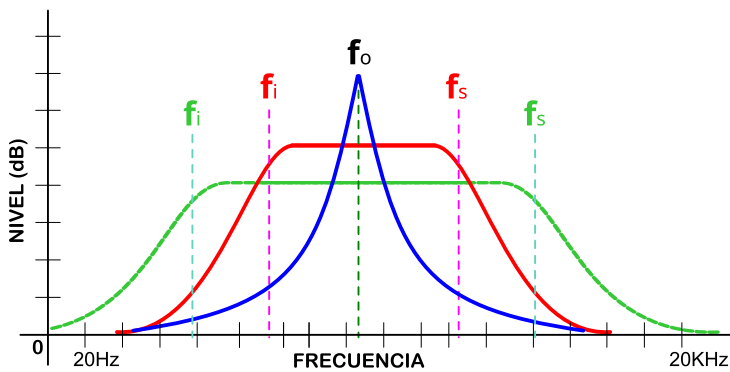
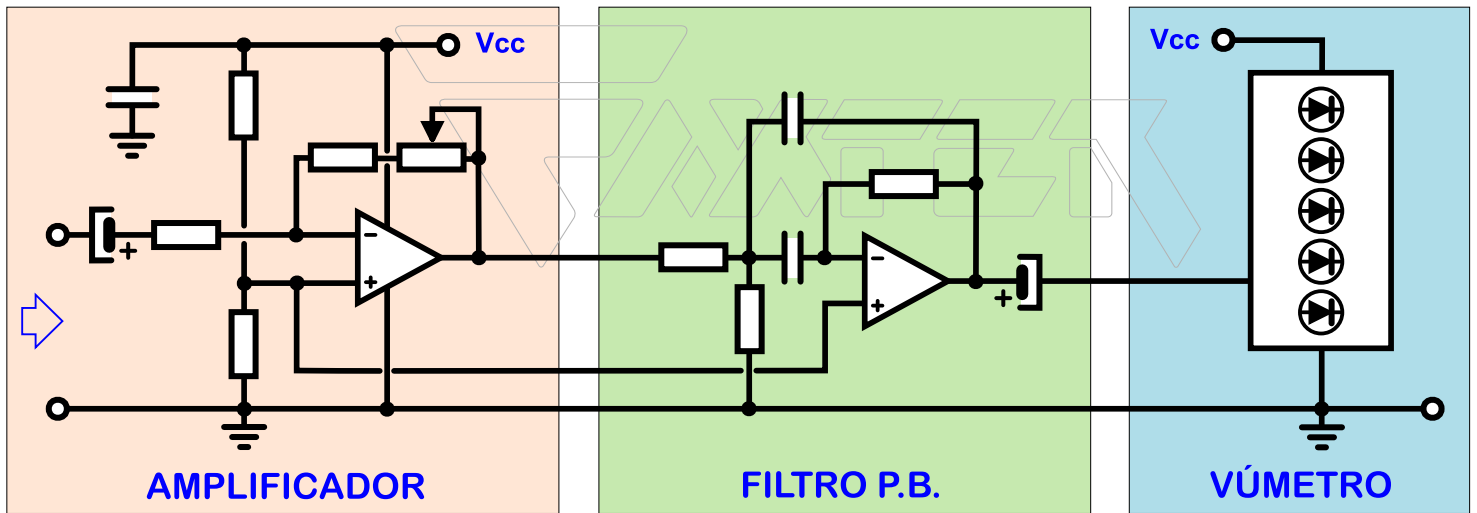
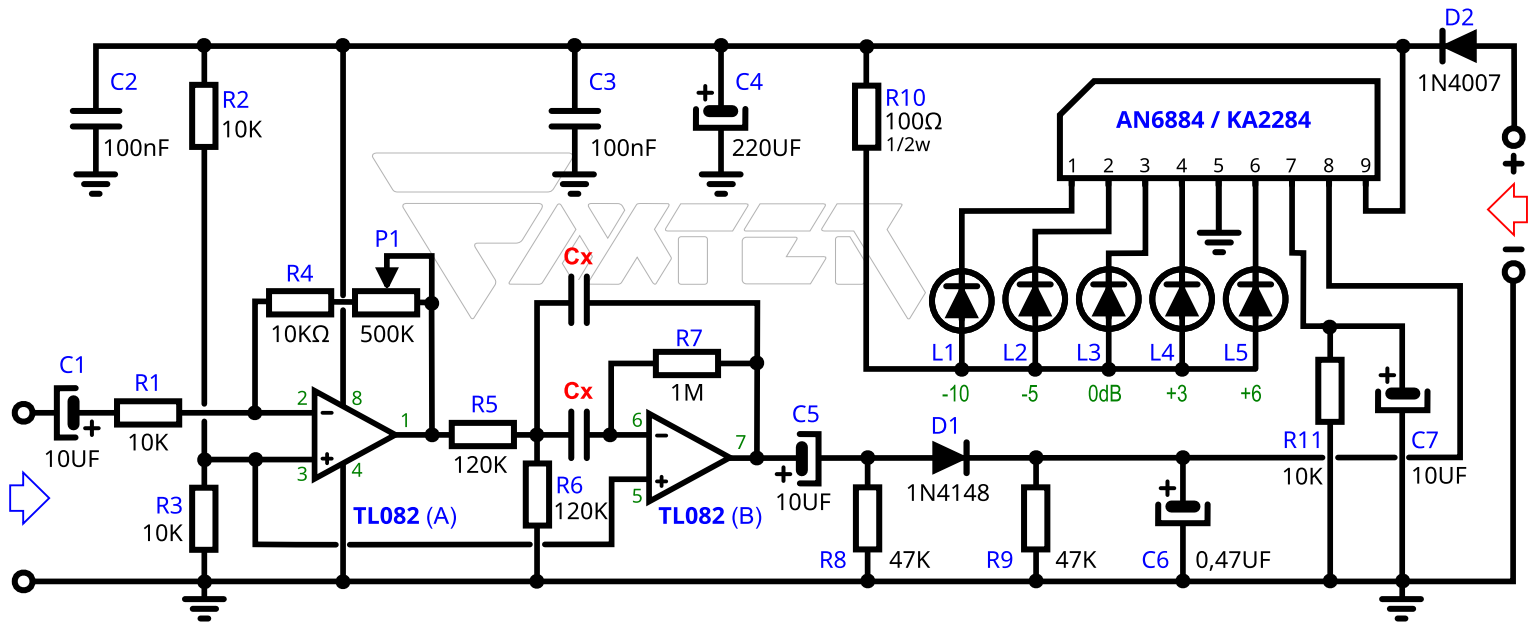
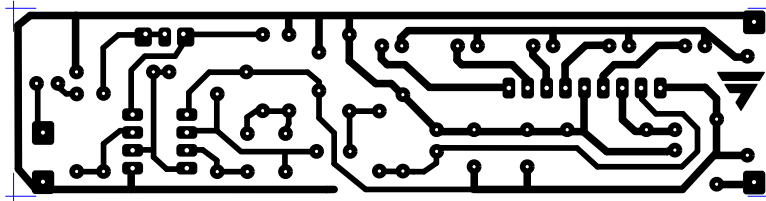


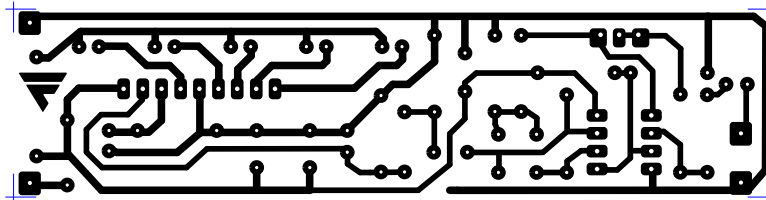
# Spectrum Analyzer



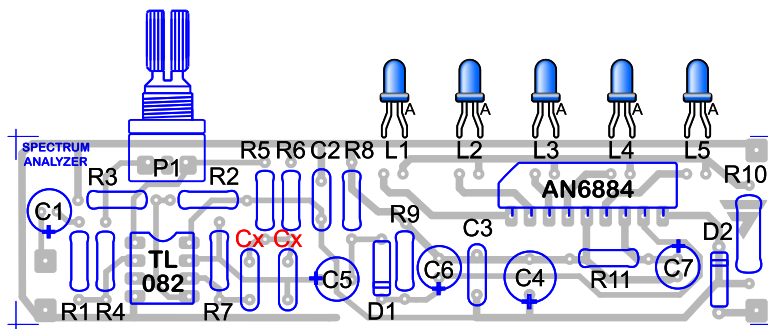
# Spectrum Analyzer



PCB MODO ESPEJO (10 x 2,5 cm.)



PCB LADO PISTAS (10 x 2,5 cm.)



PCB LADO COMPONENTES

Cant.	Valor	Designador
	<b>CONDENSADORES</b>	
3	10uF	C1,C5,C7
2	100nF	C2,C3
1	220uF	C4
1	0,47uF	C6
2	Ver Tabla	<b>Cx</b>
	<b>RESISTENCIAS</b>	
1	500KΩ	P1
2	47KΩ	R8,R9
4	10KΩ	R1,R2,R3,R4,R11
2	120KΩ	R5,R6
1	1MΩ	R7
1	100Ω (1/2W)	R10
	<b>SEMICONDUCT</b>	
1	TL082	TL082
1	AN6884	AN6884
1	1N4148	D1
1	1N4007	D2
5	LED 5mm	L1 - L5

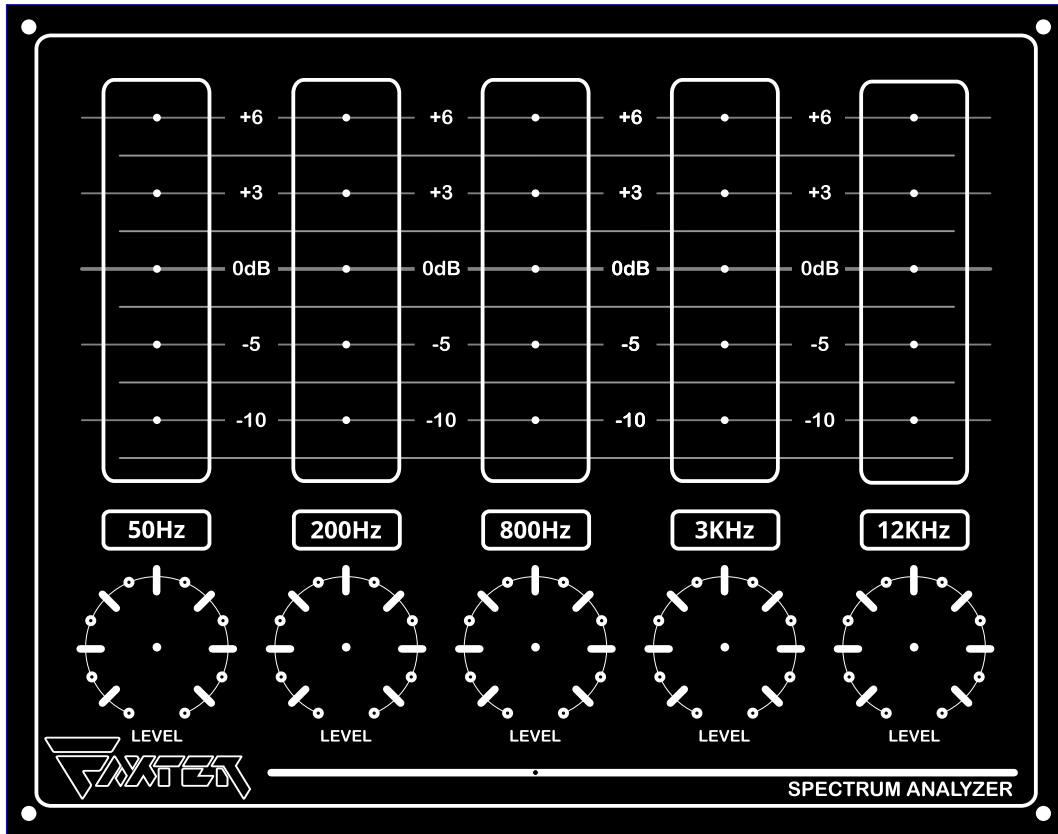
## 5 bandas (COMERCIAL)

f <sub>o</sub>	Cx
12KHz	56pF
3KHz	220pF
800Hz	820pF
200Hz	3,3nF
50Hz	12nF

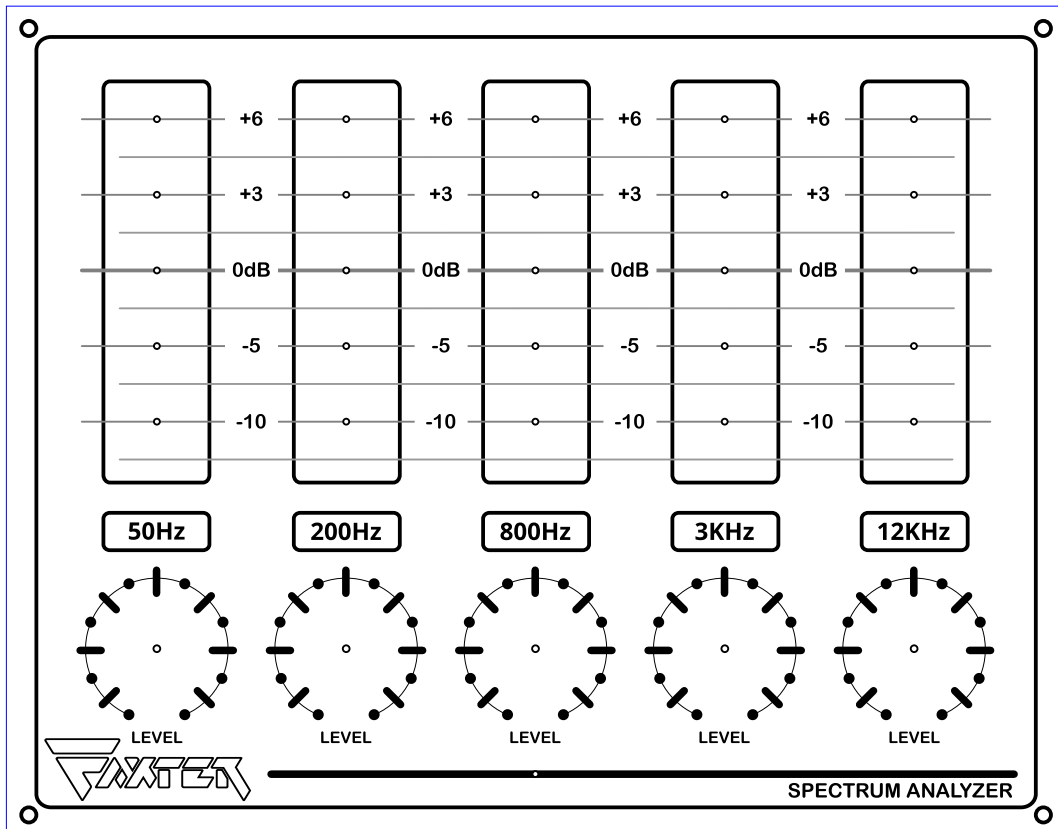
## 10 bandas (TEÓRICO)

f <sub>o</sub>	Cx
16KHz	39pF
8KHz	81pF
4KHz	162pF
2KHz	325pF
1KHz	650pF
500Hz	1,3nF
250Hz	2,6nF
125Hz	5,2nF
64Hz	10,2nF
32Hz	20,3nF

# Spectrum Analyzer



PANELES FRONTALES PARA 5 BANDAS Y 5 LED



# Spectrum Analyzer

CONEXIONADO (Vcc = 12V)

